

---

PROFESSIONAL POE POWERED LOUDSPEAKER  
OPERATION MANUAL

DSP-106P/DSP-108P/DSP-110P

Guangzhou DSPPA Audio Co., Ltd

Address: NO.1 Xiahe Road, Jianggao, Baiyun, Guangzhou, Guangdong, China

Tel: +86-20-37166520

Email: [export@dsppa.com](mailto:export@dsppa.com) / [info@dsppa.com](mailto:info@dsppa.com)

Website: [www.dsppatech.com](http://www.dsppatech.com)



---

## CAUTION



**Keep this device away from rain and moisture!  
Unplug mains lead before opening the housing!**

**For your own safety. Please read this user manual carefully before your initial start-up.**

### DEAR CUSTOMER:

Thank you choose our products! In order to ensure the safety of the machine and you, at the same time, make you can enjoy the best sound effects, back in before connecting or operating the machine be sure to read the instruction, please after reading this manual properly kept for future use.

### OPEN - PACKAGE

After open the packing, please make sure the machine to see if there is damage during transportation, and in accordance with the requirements of this manual wiring and test each function more, if there is any question, please immediately notify the sales department.



This equipment is only Yu Zaifei hot  
With climate region under the condition of use



This equipment applies only to the altitude  
Use below 2000 metres



Don't discarded, recycled use



This product is suitable for indoor use only



The high voltage electricity danger sign



Pay attention to warning signs



Product safety grounding mark

## MAINTAIN

A: when the equipment need to clean, can wipe with dry cloth, spit abnormal machine dirt, preferable for cloth cleaning fluid on the sheng, in the container for 3-5 seconds, remove dirt rub-up, use dry cloth to wipe the body.

B: don't use alcohol, soluble liquid, pesticides or other volatile decayed liquid to wipe the appearance, otherwise it will damage to the surface of the machine, you are the same for a long time to place or woven by chemical qualitative cloth to wipe the surface, will eventually fade or loss on the surface of a machine, please read the instruction carefully when you need to use the cleaner rear can use.

## POE SYSTEM



DSP-106P  
2-way,  
6.5-inch POE Loudspeaker System  
75W(RMS), 120°(HxV)

DSP-108P  
2-way,  
8-inch POE Loudspeaker System  
120W(RMS), 100°x80°(HxV)

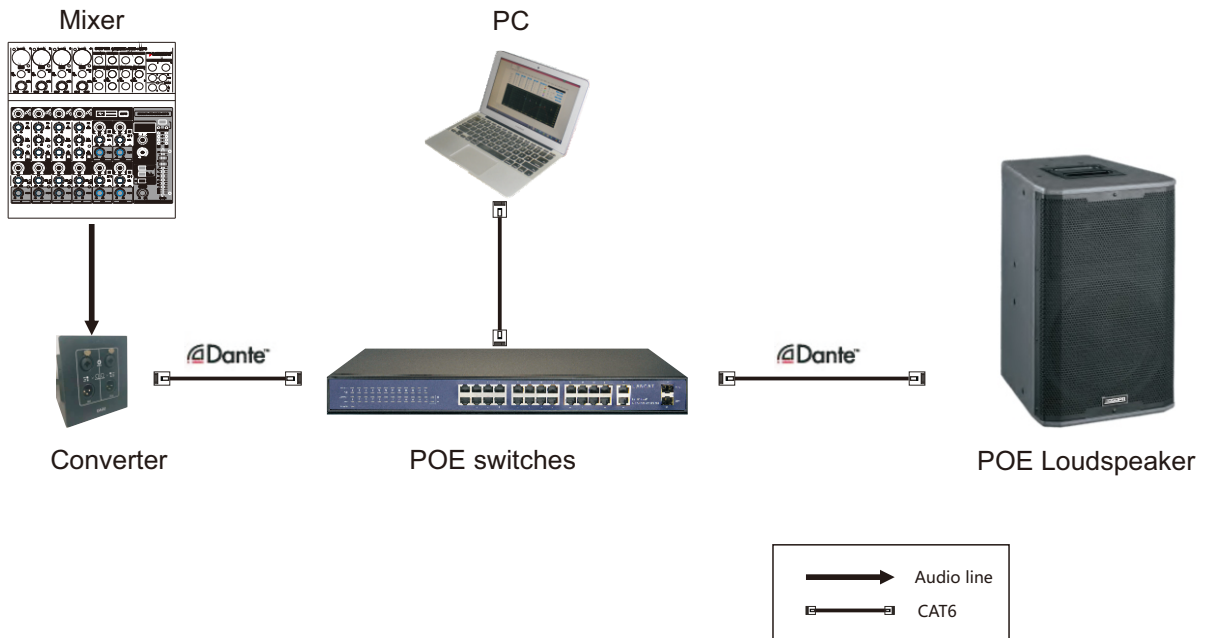
DSP-110P  
2-way,  
10-inch POE Loudspeaker System  
150W(RMS), 100°x80°(HxV)

## Amplifier Specifications

So equipment according to the technical parameters and appearance may be related to the different descriptions or illustrations. Our company always try our best to ensure the highest levels of quality. Necessary modifications will not advance

Model	DSP-106P	DSP-108P	DSP-110P
LF Unit	6.5"x1	8"x1	10"x1
HF Unit	1.0"x1	1.0"x1	1.0"x1
Frequency Response	80Hz-18KHz(±3dB)	65Hz-18KHz(±3dB)	60Hz-18KHz(±3dB)
Nominal Impedance	8ohm	8ohm	8ohm
Coverage Pattern	120°(H)	100°x80°(HxV)	100°x80°(HxV)
Power Supply	POE	POE	POE
Input Sensitivity	92dB	93dB	96dB
AES Power	150W-LF,30W-HF	240W-LF,70W-HF	300W-LF,70W-HF
Peak Power	300W-LF,60W-HF	480W-LF,140W-HF	600W-LF,140W-HF
Max SPL	115dB	118dB	118dB
Input/Output	Dante	Dante	Dante
Dimensions(WxDxH)	240x225x405mm	285x270x415mm	335x315x530mm
Weight	8kg	9.8kg	13.5kg

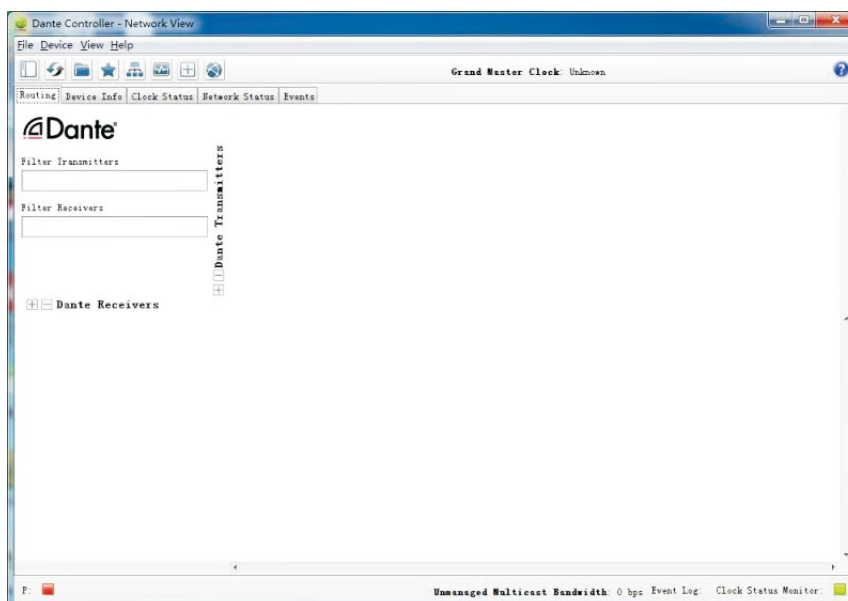
## LINK



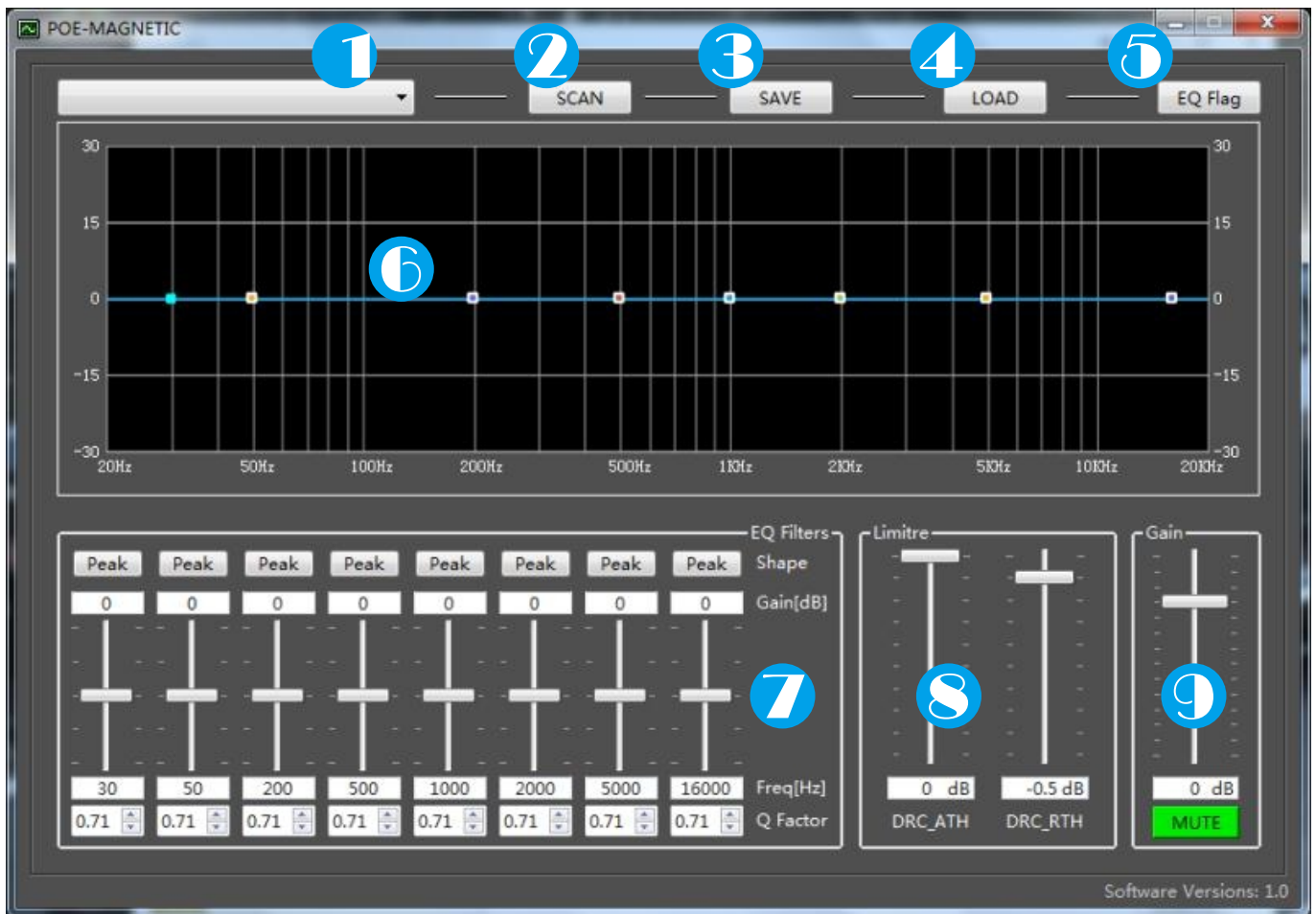
## Dante Controller software

Dante Controller is a free software application that allows you to route audio and configure devices over Dante's network. Setting up Dante's network has never been easier with automatic device discovery, one-key signal routing, and user-editable device and channel tagging. Dante Controller software can be downloaded from Audinate's official website and more details about Dante's audio connection can be found.

Note: this software only works on Windows 7 and above. Check out Audinate's official website for details



# POE software



- 1.Connection shows: Different POE loudspeakers can be selected for debugging through the drop-down triangle arrow,and different ID names correspond to different The speaker.
- 2.SCAN: Click this button to scan out the ID that is currently connected to Dante signal device on the switch and displayed in the connection shows.
- 3.SAVE:Click this button to save the current EQ equalization value, gain, limit and other parameters into the POE module.
- 4.LOAD: Click this button to get the EQ equilibrium value,gain, pressure limit and other parameters on the POE.
- 5.EQ Flag:Click this button to reset the current EQ equilibrium value, and all EQ equilibrium values will be restored to the initial value.
- 6.view : The EQ equilibrium value can be viewed in this interface.
- 7.EQ Filters : There are 8 ends of EQ equilibrium. Shape, Gain, Freq, Q Factor, etc. Shape have (Peak,Lowpass,Highpass) ; Gain(from -12 to +12dB);Freq(from 20 to 20000Hz); Q Factor(from 0.4 to 50)
- 8.Limitre: Set the DRC\_ATH and DRC\_RTH, (from -25 to 0dB)
- 9.Gain: Set the gain for the POE module(from -40 to +12dB).You can also be staticTone Settings. When green, it means ummute. When red, it means mute